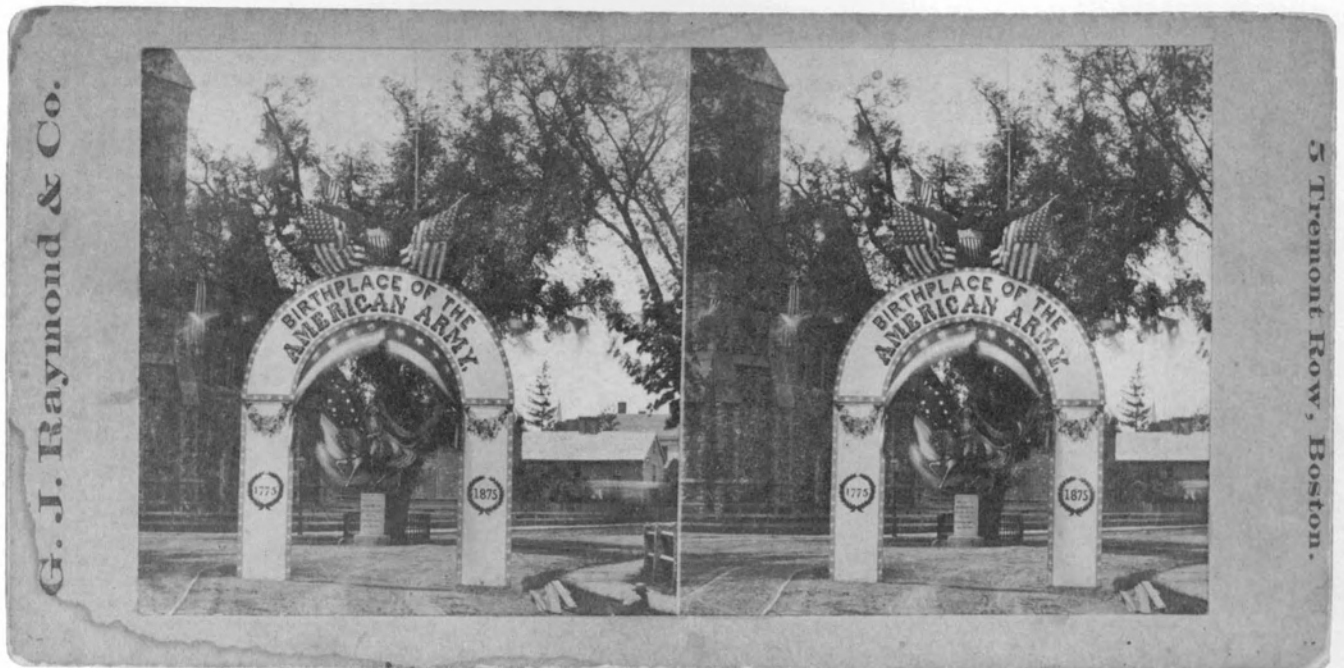


MAY/JUNE 1983

# STEREO WORLD

THE NATIONAL STEREOSCOPIC ASSOCIATION





*G. J. Raymond & Co. of Boston 1875*

# Then and Now

by Neal Bullington

*Cambridge Common in 1982 by Neal Bullington.*

The Cambridge Common Historic District (Massachusetts) is on the National Register of Historic Places. Here was located the old elm tree where legend has it that General Washington took command of the American troops, some 9,000 men who had gathered there independently to form the Continental Army. As can be seen from the 1875 view, the elm was in the middle of the street near the First Church Congregational. When it died in 1923 the stone monument was moved away from the street and a new elm started from cuttings off the original. The new tree is inside the circular iron fence in this 1982 view.

Do you have any interesting combinations of THEN & NOW views? Comic, historical, or scenic subjects are all welcome. Send views with a brief description to THEN & NOW, John Dennis, 4329 SE 64th, Portland OR 97206.































































































