

# Stereo World

VOLUME 8 NO. 5 NOVEMBER/DECEMBER 1981



THE NATIONAL STEREOSCOPIC ASSOCIATION

# NSA Regions

The N.S.A. has been divided into 12 geographic regions with a Regional Director assigned to each to act as the representative in your area. We hope members will work with them to promote the N.S.A., increase membership and establish regular regional meetings. There are no regional divisions for Canada at this time. Once the United States regions have been well established, then we hope to do the same for our Canadian and other non-U.S. members.

**Gordon D. Hoffman**, *Vice-President for Regional Affairs*  
 Box 324  
 Green Lake, WI 54941  
 (414) 294-6458

## Regional Directors

### NORTHWEST

*Washington, Oregon,  
 Alaska, Montana, Idaho*  
 John Dennis  
 4913 S.E. Steele  
 Portland, OR 97206  
 (503) 771-4440

### CENTRAL MIDWEST

*Illinois, Indiana,  
 Missouri, Michigan*  
 Tom and Pam Heseltine  
 R.R. #2  
 Manhattan, IL 60442  
 (815) 478-4346

### DELAWARE VALLEY

*Pennsylvania, Delaware,  
 New Jersey, upstate New York*  
 Dr. William Allen Zulker  
 134 Poplar Avenue  
 Wayne, PA 19087

### UPPER MIDWEST

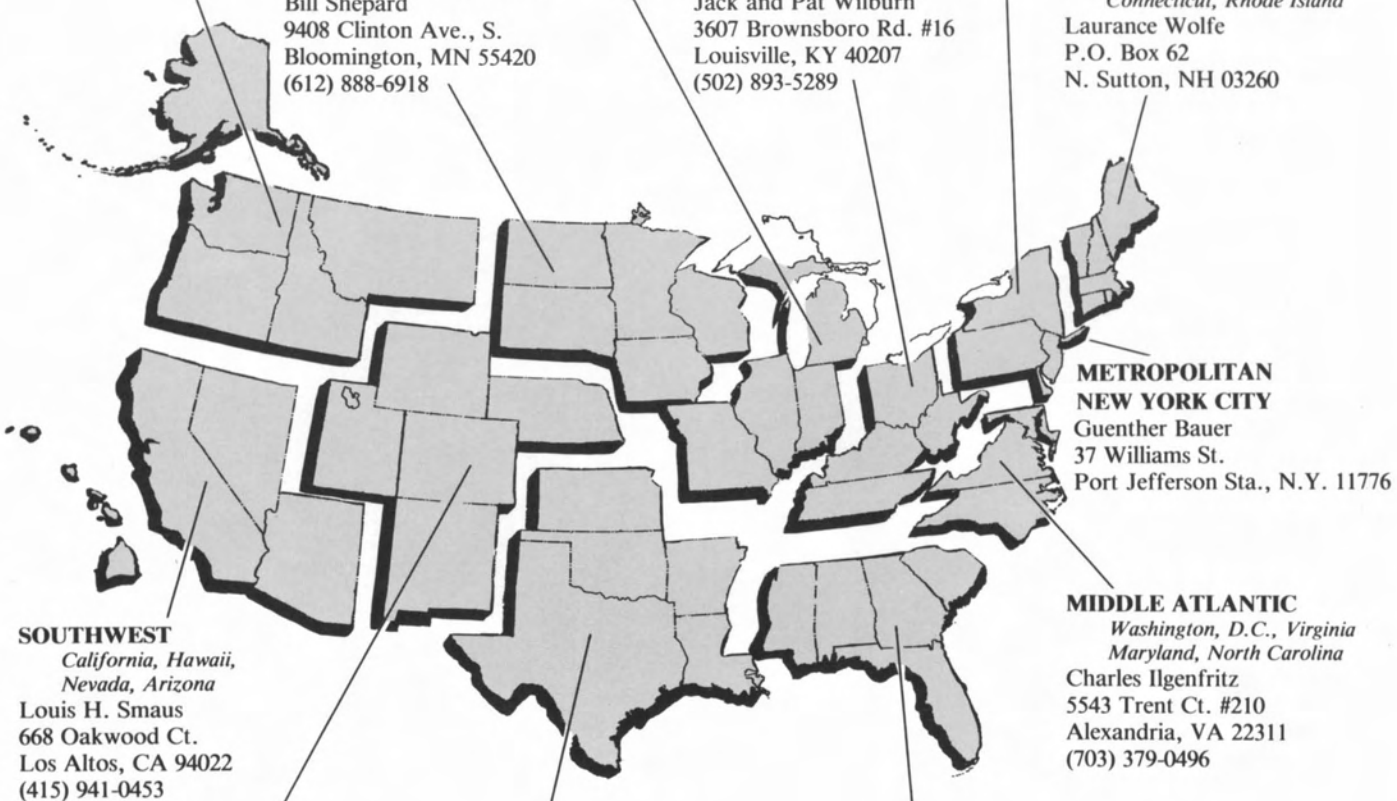
*Minnesota, Wisconsin, Iowa,  
 North and South Dakota*  
 Bill Shepard  
 9408 Clinton Ave., S.  
 Bloomington, MN 55420  
 (612) 888-6918

### EASTERN MIDWEST

*Kentucky, Ohio,  
 West Virginia, Tennessee*  
 Jack and Pat Wilburn  
 3607 Brownsboro Rd. #16  
 Louisville, KY 40207  
 (502) 893-5289

### NEW ENGLAND

*Maine, New Hampshire,  
 Vermont, Massachusetts,  
 Connecticut, Rhode Island*  
 Laurance Wolfe  
 P.O. Box 62  
 N. Sutton, NH 03260



### METROPOLITAN NEW YORK CITY

Guenther Bauer  
 37 Williams St.  
 Port Jefferson Sta., N.Y. 11776

### SOUTHWEST

*California, Hawaii,  
 Nevada, Arizona*  
 Louis H. Smaus  
 668 Oakwood Ct.  
 Los Altos, CA 94022  
 (415) 941-0453

### MIDDLE ATLANTIC

*Washington, D.C., Virginia,  
 Maryland, North Carolina*  
 Charles Ilgenfritz  
 5543 Trent Ct. #210  
 Alexandria, VA 22311  
 (703) 379-0496

### MOUNTAIN

*Colorado, Utah, Wyoming,  
 New Mexico, Nebraska*  
 William G. Eloe  
 Box 190  
 Sedalia, CO 80135  
 (303) 688-4182

### SOUTH CENTRAL

*Texas, Oklahoma, Kansas,  
 Louisiana, Arkansas*  
 Tom Rogers  
 c/o Rogers Shoe Store  
 1111 12th St.  
 Huntsville, TX 77340  
 (713) 291-0110

### SOUTHEAST

*Florida, Alabama, Georgia,  
 Mississippi, South Carolina*  
 Greg Taylor  
 8211 27th Avenue N.  
 St. Petersburg, FL 33710  
 (813) 345-1862

**IN THIS ISSUE**

**The Polaroid Vectograph—Stereo's Unkept Promise** . . . . . 4  
*by John Dennis*

**Stereo (?) Panoramas of Baltimore by William H. Weaver** . . . . . 12  
*by Ross J. Kelbaugh*

**The Presidents Letter** . . . . . 14

**Canton Winners Announced** . . . . . 15

**Hand Held Holmes Viewers** . . . . . 24  
*by Ed Berkowitz*

**NSA San Jose Meeting** . . . . . 27

**More on C.L. Weed** . . . . . 28

**REGULAR FEATURES**

**Editor's View** . . . . . 2

**Comment** . . . . . 3

**Reviews** . . . . . 15

**Thrills That Almost Touch You** . . . . . 16

**Personalities in Perspective—Jack Johnson** . . . . . 17  
*by Richard C. Ryder*

**The Unknowns** . . . . . 18

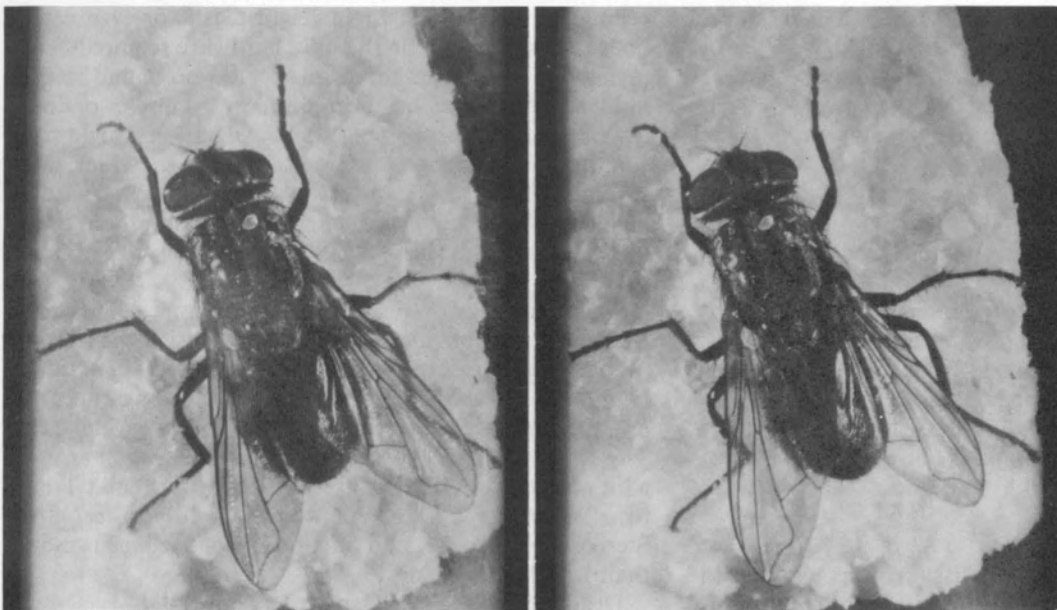
**The Society—From The Society Notebook** . . . . . 20

**Newviews** . . . . . 22

**Events** . . . . . 25

**Classifieds** . . . . . 26

*COVER: Probably the one stereo image seen by more people than any other in history, this stereo vision test is a Polaroid 3-D Vectograph of a very real fly on a sugar cube. It was made during a wartime Vectograph training class in the early 1940s and has been widely distributed and used ever since as an almost infallibly dramatic test for the presence of stereo vision. (All Vectographs, Clarence Romrell collection)*



**Board of Directors**

CHAIRMAN Richard Russack  
 MEMBERS Paul Wing and T.K. Treadwell

**Officers**

PRESIDENT T.K. Treadwell  
 EDITOR, STEREO WORLD John Dennis  
 SECRETARY John Weiler  
 TREASURER Linda S. Carter  
 VICE-PRESIDENT FOR REGIONAL AFFAIRS  
 Gordon D. Hoffman  
 VICE-PRESIDENT FOR MEMBERSHIP  
 Laurance G. Wolfe

ART DIRECTOR Richard B. McClellan  
 CONTEMPORARY STEREOSCOPY David Starkman, William Shepard and Paul Wing  
 PUBLICATIONS Jack and Pat Wilburn

STEREO WORLD is published bimonthly by the National Stereoscopic Association, Inc., P.O. Box 14801, Columbus, Ohio 43214. Annual dues \$12. (3rd Class), \$16. (First Class), \$18. (to Canada and other foreign countries, all mailed 1st. Class), and \$28. (International Air Mail). All memberships follow the publishing year for *Stereo World*, which is from the March-April issue to the Jan.-Feb. issue of the next year. All new members joining during the year will receive all the back issues for the current volume, unless only the current and future issues are desired. These pro-rated memberships cost \$2.50 per issue 3rd Class, \$3.00 First Class, and \$5.00 International Air Mail.









































































