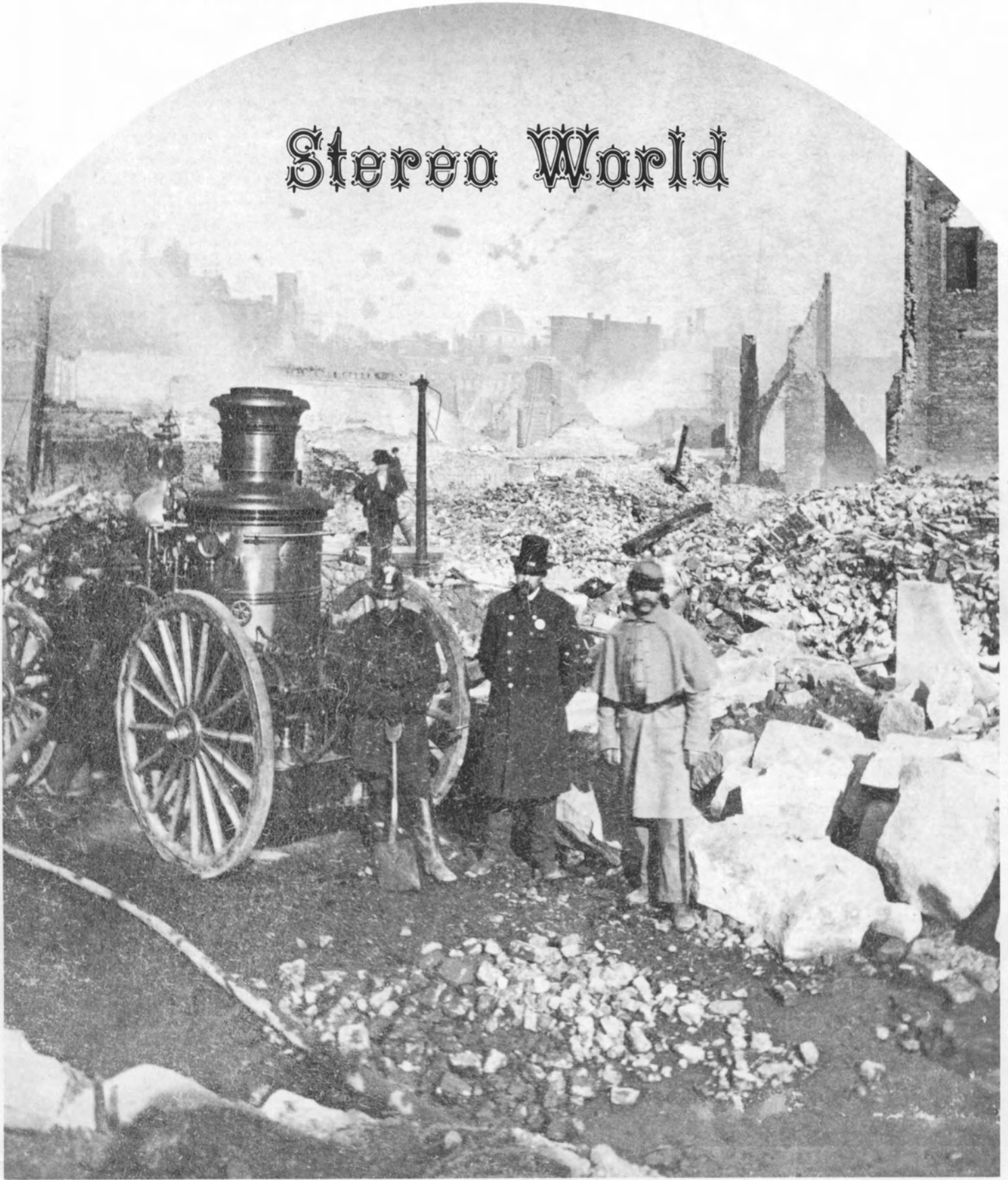
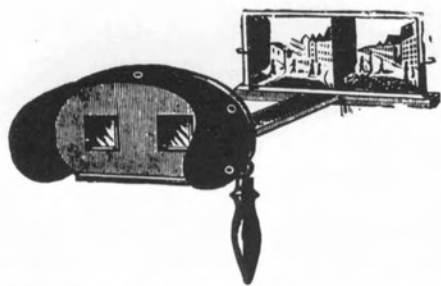


THE NATIONAL STEREOSCOPIC ASSOCIATION

Stereo World



VOL. 7, NO. 5 NOVEMBER-DECEMBER 1980



LEON JACOBSON

Antique Photographica

HILDE & LEON JACOBSON
161 GENESEE PARK DRIVE
SYRACUSE, N.Y. 13224, (315) 446-8345

Phone orders held 5 days for receipt of payment. Prompt refund on sold items. 10 day unconditional refund privilege. Include shipping costs (where required) & N.Y. State sales tax (if resident).

ADDITIONAL ITEMS ARE AVAILABLE.
LET US KNOW YOUR WANTS.

OUR ASSOCIATES IN ENGLAND, KEN & JENNY JACOBSON, SPECIALIZE IN 19TH CENTURY PHOTOGRAPHS AS WELL AS STEREO VIEWS. THEY ARE LOCATED ONE HOUR BY TRAIN FROM LONDON AND, BY APPOINTMENT (PHONE OR LETTER), CAN MEET INTERESTED PARTIES UPON REASONABLE NOTICE. THEY CAN BE CONTACTED AT "SOUTHCOTTS", PETCHES BRIDGE, GREAT BRAINTREE, ESSEX CM7,4QN, ENGLAND. PHONE (0371) 81-0566.

- 8S1 "For the Stereoscope, With Best Wishes for Xmas & the New Year". Unusual printed view from Cardiff, Wales of constellations on Xmas night. Card sent out by a "Mr. & Mrs. Heath". Unusual, F., edge creased, \$8 PP.
- 8S2 Moscow, Russia-Pagkoff House. Interesting glass view of a palace-like mansion. V.G., \$24 PP.
- 8S3 "Washing Clothes, Granville"-English village scene along a canal is depicted on this glass slide. Reminiscent of Sutcliffe's work. c.1880's, V.G., \$17 PP.
- 8S4 Mountain Glacier-Swiss. Ferrier, Soulier & Levy glass view of stark beauty. A mountain climber poses on the ice formation. V.G., \$22 PP.
- 8S5 "1286. A Full Team on the Sierras. From the Central Pacific Railroad". Yellow mt. Houseworth, 1868, of several covered wagons drawn by a string of mules. V.G., \$25 PP.
- 8S6 "Old Bets, a Sioux Squaw 120 years old will long be remembered with gratitude by many of the Minnesota Captives for her kindness to them while among the Sioux in 1862." Yellow mt. view by Whitney & Zimmerman, St. Paul. Nicely posed image of this old woman. V.G., \$25 PP.
- 8S7 "621 Feeding the Teams. Scene on the Placerville route." An absolutely fantastic yellow mt. view by Houseworth of the wagon train carrying the equipment for hydraulic mining. Tank on close wagon has chalked, "Alpha M.C. Gold Hill Whanay Sac" (as best as we can make out). 1866, V.G., \$35 PP.
- 8S8 "789. Moonlight on the Beach at Donner Lake, Placer County." Yellow mt. Houseworth, 1866, of the lovely lake w/a rowboat closeup. (The first we have seen w/a tiller for steering.) Woman in boat. Another boat & 2 men in background. VG \$8PP.
- 8S9 Watkins----"1818, Malakoff Diggings, No. Bloomfield Gravel Mining Co., Nevada Co." Water line and water spray from nozzles in view. V.G., \$20 PP.
- 8S10 Another----"The Yosemite Valley, from the Mariposa Trail, No. 1136". Nicely composed view of the mountains viewed through the trees. GC, one corner bent, \$6 PP.
- 8S11 W.G. Chamberlain, Denver-"Ute Pass". Green cabinet sized scenic view of the pass. Descriptive info on back label. \$4PP.
- 8S12 Hayden Survey-W.H. Jackson, Photographer. Anthony orange cabinet sized mt. Rocky Mountain Series, "88-View in Upper Canon of Middle Creek." From Darrah collection. VG, \$10 PP.
- 8S13 Gibson, South Pueblo, Col. Tan cabinet mt. No. 29, "William's Canon, Temple of Isis". Nice Scenic, V.G., \$5 PP.
- 8S14 W.H. Jackson, Denver, Colo., "116 Grand Canon of the Arkansas, Royal Gorge." Railroad bed next to river. Descriptive info on verso. Cabinet-sized beige card, GC, \$6 PP.
- 8S15 Another----, "688 Rainbow Falls, Ute Pass." Nice waterfall view w/same back-card descriptive label as above. GC, \$7 PP.
- 8S16 Gurnsey, Colorado Springs, Col. No. 7, "Garden of the Gods, The Gateway". Yellow imperial mt. EC, \$5 PP.
- 8S17 Another----No. 27, "The Colonade". A scenic yellow imperial mt. V.G., small scrape in one view, \$4 PP.
- 8S18 Savage & Ottinger-Union Pacific Railroad Views. Three green mt. views; "114, Tunnel No. 3 & Webber River", "116, Devil's Slide-Showing Track" & "118, Devil's Slide, side view". VG/G, \$16 PP for the lot.
- 8S19 Another----Three yellow mt. views; "Weber River", 1000 Mile Treen Weber Canon, Dam Hills lookout, Weber Canon. Very nice scenics. GC, \$10 PP for the lot.
- 8S20 F. Jay Haynes, Fargo, D.T., "No. 1306-Old Faithful Geyser During Eruption." Dynamic action scene of the geyser. Orange mt. view, VG, \$6 PP.

- 8S21 Another----Yellowstone National Park-Orange cabinet-sized view "No. 1955, Old Faithful Geyser in Action". VG, \$6 PP.

The following are an early series of perspective views, that is, stereo views of drawings specially designed to give a great 3-dimensional perspective. This idea is based on Wheatstone's early work w/stereo before photography was invented. An interesting early group of cards, the colored examples are particularly scarce.

- 8S22 ---A great colored card showing a drawing of a pedestal stereoscope encased in a 3-dimensional cube w/various writing including "Stereoscope des enfants". Marvelous early piece of stereo interest. EC, \$75 PP.
- 8S23 ---Another, nice colored drawing of a doll. VG, \$25 PP.
- 8S24 ---A great colored perspective of stacks of dominoes. \$25PP.
- 8S25 ---A colored view of a stage w/Opera written above it. \$25PP.
- 8S26 ---A strange view of a toy rabbit playing a drum. VG, \$25PP.
- 8S27 ---A black & white view w/printing: Holmes's Stereoscopic Diagrams. EC, \$20 PP.
- 8S28 ---A group of 3 black & white perspective views, VG, \$22PP.
- 8S29 "The Infant Drummer"."Major" Willie Bagley (4 years old-Wisconsin drummer boy) at Barnums Museum, N.Y." Studio pose of this young lad in "uniform" w/drum as large as he is. Yellow mt. GC, \$9 PP.
- 8S30 "Broadway, from cor. Houston St. looking North". Yellow mt. Anthony, No. 6729, (or 30). Outstanding New York City street scene. Street full of vehicle traffic. VG, small edge defect where held in Becker's viewer., \$8 PP.
- 8S31 "The Miser". Takeoff on Scrooge. Yellow mt. blind-stamped H.M. Fisher. 57. Early, GC, \$4 PP.
- 8S32 "The Market, No. 300". Yellow mt. English view in the style of John Tompson of a market scene. GC, \$5 PP.
- 8S33 Early English Comic-Gray mt. "Now Marm, Say When-". Two gentlemen attempt to hoist a very large lady aboard a horse-drawn omnibus. VG, \$5 PP.
- 8S34 "Tooth Drawing". Very early gray mt. comic of a tooth being extracted w/the "dentist" pulling on a string fastened to the "Patient's" tooth. GC, \$4 PP.
- 8S35 Another----"Tooth Drawing-Gently Does It." This view hand-tinted w/props about such as medicine bottles, etc. GC \$5 PP.
- 8S36 "Fancy Work". White mt., possibly English of two ladies doing intricate embroidery. One uses a stove-heated iron. VG \$5PP.
- 8S37 Three occupationals-English. The first a nicely tinted view of a basket weaver surrounded by his work; the second, of a lady basket seller; also tinted; the third, of a shoemaker fitting a pair on a lady. All GC, except basket seller has a bit of the card corner chewed off, \$10 PP.
- 8S38 "Haddon Hall, No. 166" by J. Latham, Matlock, England. Photo of this well-known castle-like mansion. GC, \$3 PP.
- 8S39 "10800-Mexico's Principal Harbor, Vera Cruz". Curved mt. Keystone of dock workers in front of freighter. VG, \$3 PP.
- 8S40 Anthony-Early yellow mt. w/revenue stamp on back. California No. 1, The Yo-semite Valley. GC, some foxing, \$6 PP.
- 8S41 ---Another, Bridge of Sighs, Venice, No. 1799, GC, some foxing, \$3 PP.
- 8S42 ---Another, Washington City series, No. 1993, U.S. Treasury Bldgs. Nice view w/bulletin board in foreground. GC, \$3 PP.
- 8S43 ---Another, No. 2986, White House(sic), Front View. G.\$4PP.
- 8S44 Anthony Artistic Series-Cabinet-sized yellow mt. High Falls, N.Y., "No. 119, Vessels loading coal at the docks of the Delaware & Hudson Canal, Rondout Creek." Nicely composed view of a two-masted sailing vessel. GC, \$6 PP.
- 8S45 Monitor Terror, Phila. An early odd metal warship on American View orange mt. GC, \$3 PP.

